



**LEADING  
THE NEW WAVE OF  
FUTURE LOGISTICS**



**INTERFREIGHT  
ENGINEERING**

# Contents



**INTERFREIGHT  
ENGINEERING**

**01**

## **Overview**

Company Introduction | Financial Condition

**02**

## **Organization**

Organizational Structure | Member Profiles

**03**

## **Service**

Global Freight Forwarding | Project Logistics | Transportation Engineering

# Overview



**INTERFREIGHT  
ENGINEERING**

## Company History

- 2020 Established Interfreight Engineering Co., Ltd.
- 2020 Integrated operation contract with Gulf International Logistics
- 2021 Obtained ISO9001, ISO14001 certificates
- 2021 Registered as a partner of SIMENS ENERGY
- 2022 Registered as a partner of Mitsui E&S, JGC
- 2023 Registered as a US FMC Licensed NVOCC
- 2023 Registered as a partner of JMU
- 2023 Awarded Petronas ZLNG Project (JGC, SHI JV)
- 2023 Obtained SME Certificate

## Business Areas



# Financial Condition

Interfreight Engineering is a **logistics expert group** composed of professionals with years of experience in various logistics fields.

Under the motto of ‘**Most efficiency, quickly, and safely**’, we, based on our experience and knowledge, **economize our customer’s cost and time.**

Company Name	<b>Interfreight Engineering Co., Ltd.</b>			<b>CORPORATE CREDIT RATING</b>
Representative	Yang Jung Min			
Business Reg.#	725-81-01956	Corporate Reg.#	110111-7693298	<b>BBB-</b>
Telephone#	02-6403-1900	Business Start Date	2020/12/07	
Address	42, World Cup-ro, Mapo-gu, Seoul, Republic of Korea			
기업형태	일반, 중소기업			
표준산업분류(업종)	H52992(화물운송중개, 대리 및 관련 서비스업)			<b>Cash Flow Rating</b>
Primary Business	Logistics Service			
Financial Closing Date	2022/December/31	Credit Rating Date	2023/July/07	<b>A</b>
Credit Rating Validity	2023/July/07 ~ 2024/July/06			

\* Credit Rating Agency: NICE D&B ([www.nicednb.com](http://www.nicednb.com))

<b>CORPORATE CREDIT RATING</b>											
	AAA	+0-	+0-	+0-	+0-	+0-	+0-	CC	C	D	NG
As satisfactory credit rating is acknowledged, the capacity to cope with environmental changes is somewhat limited.											

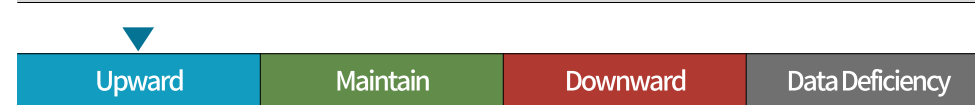
<b>Cash Flow Rating</b>								
	A	B	C+	C-	D	E	NF	NR
The cash flow is stable, and the self-generating capability of required funds is highly favorable.								

## Comparative Growth Rating

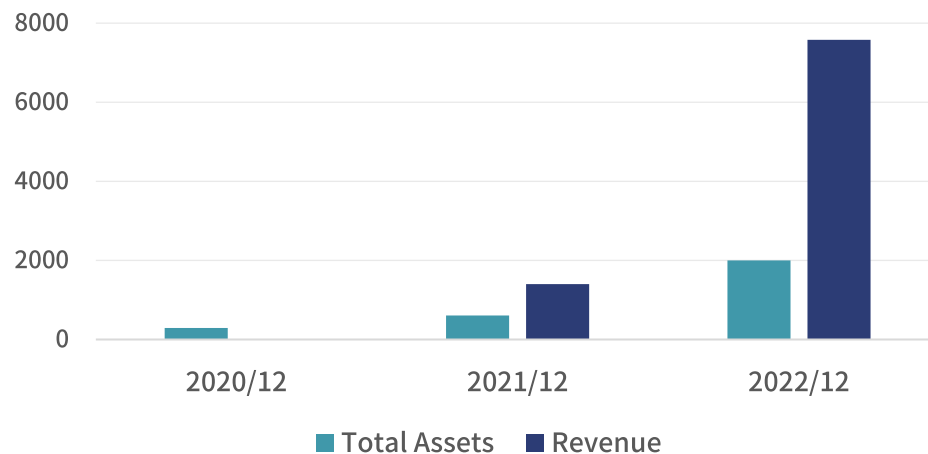


\* Comparison with the industry average

## Growth Trend Rating



\* Three-year trend based



\* **ISO 9001, ISO 14001** certified (2021) | **USA FMC Licensed NVOCC** registered (2023) | **Cargo Liability Insurance** enrolled (CHUBB, 100 million KRW per accident case)

# Organization

Interfreight Engineering is a **logistics expert group** composed of professionals with years of experience in various logistics fields.

Under the motto of ‘**Most efficiency, quickly, and safely**’, we, based on our experience and knowledge, **economize our customer’s cost and time.**

## 5 Functional Group | 16 Members (January, 2024)



### Organic and Flexible Five Functional Groups

Starting with the Business Development Group, our five groups **operate organically** and **flexibly**, providing the **best services.**

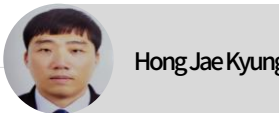
#### Business Development and Management Group



Yang Jung Min



Jung Hyung Eun Peter



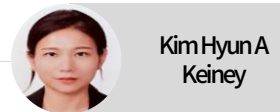
Hong Jae Kyung

#### Management Support Group



Kwon Kyung Sun

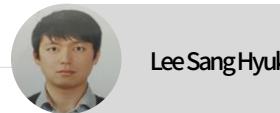
#### Business Operation Group



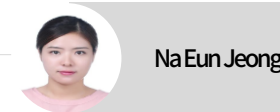
Kim Hyun A Keiney



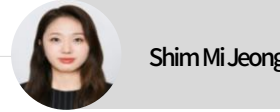
Lim Tae Ho



Lee Sang Hyuk



Na Eun Jeong



Shim Mi Jeong

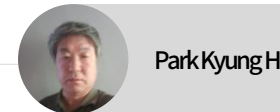


Choi Aram

#### Field Supervision Group

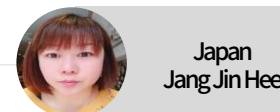


Shin Yun ho



Park Kyung Ho

#### Overseas Local Operation Group



Japan Jang Jin Hee



China Eric Yuan



UAE Kim Dong Hyun



Saudi Arabia Kim Kwang Soo

Interfreight Engineering is a **logistics expert group** composed of professionals with years of experience in various logistics fields.

Under the motto of ‘**Most efficiency, quickly, and safely**’, we, based on our experience and knowledge, **economize our customer’s cost and time.**

## Member Profiles

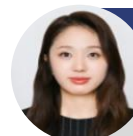
### Details of Project Logistics Experts

**11 members with over 5 years of overseas EPC project** (January, 2024)



Yang Jung Min

2008-2022 CJ LOGISTICS, PROJECT TEAM LEADER  
GLOBAL EPC PROJECT (JGC, MHI, CHIYODA, TOYO, TR, SIEMENS, DAEWOO E&C, POSCO E&C, HYUNDAI HEAVY INDUSTRIES, ETC.)



Shim Mi Jeong

2010-2020 CJ LOGISTICS, PROJECT TEAM A.MANGER  
2020-2022 RHENUS LOGISTICS  
GLOBAL EPC PROJECT (DAEWOO E&C, HYUNDAI E&C, HYUNDAI ENGINEERING, ETC.)



Jung Hyung Eun (Peter)

2013-2022 PENTAGON FREIGHT SERVICES  
KOREA BRANCH MANAGER  
MANY PROJECTS RELATED BRITISH PETROLEUM



Jang Jin Hee

2006-2020 CJ LOGISTICS JAPAN  
2020-2022 H&P LOGIS  
GLOBAL EPC PROJECT (JGC, MHI, CHIYODA, TOYO, ETC.) CORRESPONDENT IN JAPAN



Hong Jae Kyung

2011-2023 DAEWOO LOGISTICS, PROJECT TEAM LEADER  
GLOBAL EPC PROJECT (POSCO E&C, HANWHA E&C, HYUNDAI E&C, SAMSUNG ENGINEERING, ETC.)



Eric Yuan

2004-2022 CJ LOGISTICS CHINA  
GLOBAL EPC PROJECT (HYUNDAI E&C, HYUNDAI ENGINEERING, DAEWOO E&C, POSCO E&C, JGC, MHI, CHIYODA, TOYO, ETC.)



Kim Hyun A (Keiney)

2008-2018 CJ LOGISTICS, PROJECT TEAM MANAGER  
GLOBAL EPC PROJECT (HYUNDAI E&C, HYUNDAI ENGINEERING, HYUNDAI HEAVY INDUSTRIES, ETC.)



Kim Dong Hyun

2018- GULF INTERNATIONAL LOGISTICS CEO  
EXALE IRAQ DEPUTY COUNTRY MANAGER  
EXALMAJDOUIE PROJECT MANAGER, CKLINE MANAGER



Lee Sang Hyuk

2010-2020 CJ LOGISTICS, PROJECT TEAM MANAGER  
2020-2022 KUEHNE-NAGEL  
GLOBAL EPC PROJECT (JGC, MHI, TR, SIEMENS, POSCO E&C, HYUNDAI E&C, ETC.)



Kim Kwang Soo

2018- GULF INTERNATIONAL LOGISTICS KSA  
EXALMAJDOUIE PROJECT MANAGER, KLS MANAGER  
GLOBAL EPC PROJECT (DALIM, SAMSUNG, DOOSAN, SK E&C, ETC.)



Na Eun Jeong

2013-2021 CJ LOGISTICS, PROJECT TEAM MANAGER  
GLOBAL EPC PROJECT (JGC, MHI, TR, SIEMENS, POSCO E&C, HYUNDAI HEAVY INDUSTRIES, ETC.)

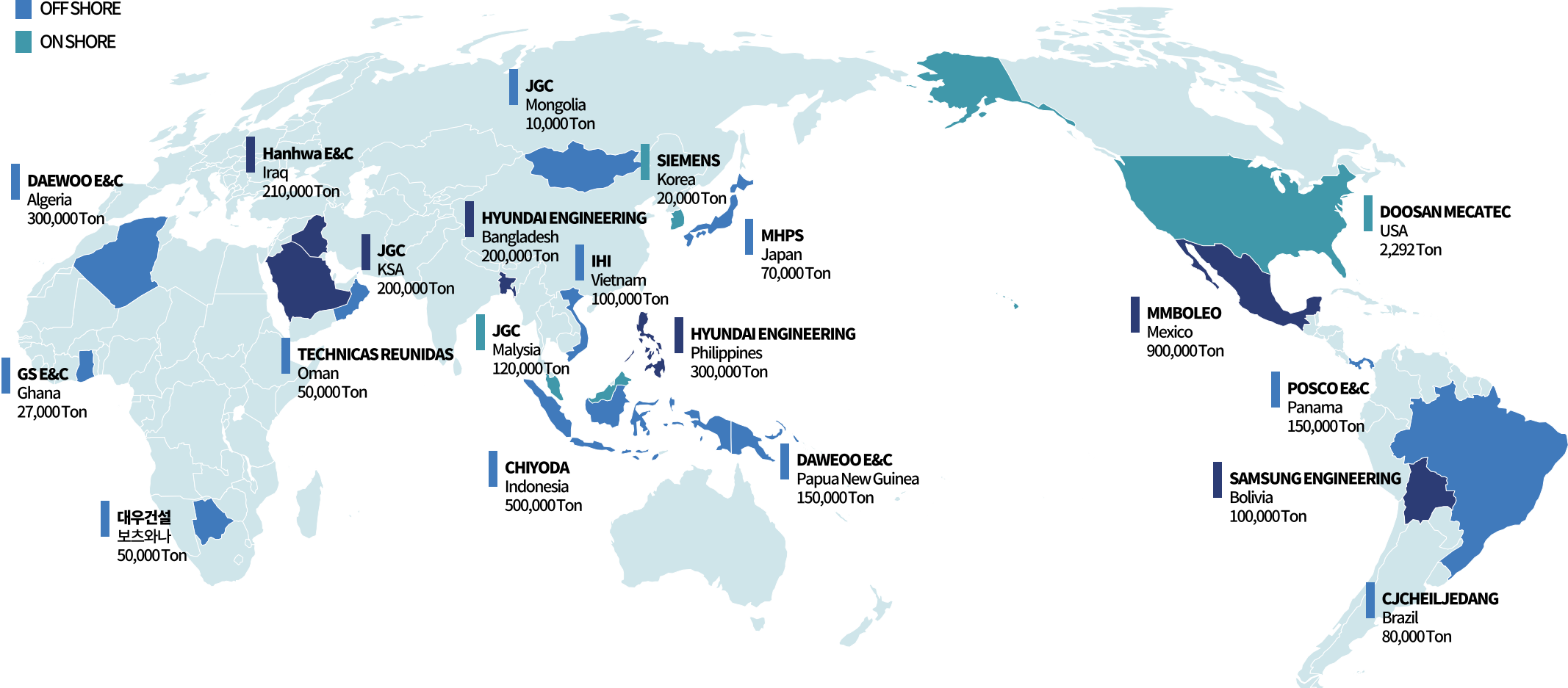
## Members Key Accomplishments

Interfreight Engineering is a **logistics expert group** composed of professionals with years of experience in various logistics fields.

Under the motto of ‘**Most efficiency, quickly, and safely**’, we, based on our experience and knowledge, **economize our customer’s cost and time.**

Over **25 Countries** | **50 Projects** | **6,400,000 Tons** executed

- ON/OFF SHORE
- OFF SHORE
- ON SHORE



**Interfreight Engineering** is a **logistics expert group** composed of professionals with years experience in various logistics fields.

Under the motto of ‘ **Most efficiency, quickly, and safely**’, we, based on our experience and knowledge, **economize our customer’s cost and time.**

## Executed Projects Details

Client	Region	Project Name	Project Type	Work Scope	Duration	Volume (Ton)	Engaged Company	Person In Charge
Hyundai Engineering	Bangladesh	BSCP PROJECT	PLANT (POWER)	ON/OFF SHORE	2013-2015	200,000	CJ Logistics	Yang JM, Kim HA, Lee SH, Na EJ, Shim MJ
Hyundai Engineering	Thailand	TLAB PROJECT	PLANT (OTHER)	ON/OFF SHORE	2014-2016	200,000	CJ Logistics	Yang JM, Kim HA, Lee SH, Na EJ, Shim MJ
Hyundai Engineering	Philippines	TVEP PROJECT	PLANT (POWER)	ON/OFF SHORE	2015-2018	300,000	CJ Logistics	Yang JM, Kim HA, Lee SH, Na EJ, Shim MJ
Hyundai Heavy Industry	KSA	JAZAN REFINERY & TERMINAL PROJECT	OIL&GAS REFINERY	ON/OFF SHORE	2014-2016	60,000	CJ Logistics	Yang JM, Kim HA, Lee SH, Na EJ, Shim MJ
Hyundai E&C	Myanmar	MYANMAR SUBSTATION 1	PLANT (OTHER)	OFF SHORE	2019-2021	25,000	Daewoo Logistics	Hong JK
Hyundai E&C	Myanmar	MYANMAR SUBSTATION 2	PLANT (OTHER)	OFF SHORE	2021-2023	35,000	Daewoo Logistics	Hong JK
Hyundai E&C	Antarctic	Antarctic JANGBOGO Station PROJECT	OTHER CONST.	ON/OFF SHORE	2013-2014	80,000	CJ Logistics	Yang JM, Kim HA, Lee SH, Na EJ, Shim MJ
Hyundai E&C	Venezuela	VERE PROJECT	OTHER CONST.	ON/OFF SHORE	2013-2014	30,000	CJ Logistics	Yang JM, Kim HA, Lee SH, Na EJ, Shim MJ
Hanwha E&C	KSA	MAADEN GOLD MINE	OTHER CONST.	ON/OFF SHORE	2013-2018	30,000	Daewoo Logistics	Hong JK
Hanwha E&C	Algeria	BISKRA SCPP	PLANT (POWER)	ON/OFF SHORE	2014-2018	60,000	Daewoo Logistics	Hong JK
Hanwha E&C	Vietnam	KN/VN CAM LAM	PLANT (OTHER)	ON/OFF SHORE	2019-2021	35,000	Daewoo Logistics	Hong JK
Hanwha E&C	Iraq	BISMAYA NEW CITY CONST.	OTHER CONST.	ON/OFF SHORE	2019-2021	210,000	Daewoo Logistics	Hong JK
Posco E&C	Indonesia	STEEL MILL CONST.	OTHER CONST.	ON/OFF SHORE	2011-2013	792,000	Daewoo Logistics	Hong JK
Posco E&C	Indonesia	LNG TERMINAL & OTHERS	OTHER CONST.	OFF SHORE	2017-2019	18,000	Daewoo Logistics	Hong JK

**Interfreight Engineering** is a **logistics expert group** composed of professionals with years experience in various logistics fields.

Under the motto of ‘ **Most efficiency, quickly, and safely**’, we, based on our experience and knowledge, **economize our customer’s cost and time.**

## Members Key Accomplishments

Client	Region	Project Name	Project Type	Work Scope	Duration	Volume (Ton)	Engaged Company	Person In Charge
Posco E&C	Panama	Colon Project	PLANT (POWER)	OFF SHORE	2016-2018	150,000	CJ Logistics	Yang JM, Kim HA, Lee SH, Na EJ, Shim MJ
TOYO ENGINEERING	Thailand	MOC2 project	PLANT (OTHER)	OFF SHORE	2015-2016	70,000	CJ Logistics	Yang JM, Kim HA, Lee SH, Na EJ, Shim MJ
TECHNICAS REUNIDAS	Oman	DUQM PROJECT	OIL&GAS REFINERY	OFF SHORE	2018-2021	50,000	CJ Logistics	Yang JM, Kim HA, Lee SH, Na EJ, Shim MJ
CHIYODA	Indonesia	Manyar Smelter Project	OIL&GAS REFINERY	OFF SHORE	2021-2023	500,000	<b>IFE</b>	Yang JM, Kim HA, Lee SH, Na EJ, Shim MJ
SIEMENS	Korea	YEOJU LNG POWER PLANT	PLANT (POWER)	OFF SHORE	2020-2021	5,000	<b>IFE</b>	Yang JM, Kim HA, Lee SH, Na EJ, Shim MJ
SIEMENS	Korea	ICHEON COMBINED POWER PLANT	PLANT (POWER)	OFF SHORE	2020-2021	5,000	<b>IFE</b>	Yang JM, Kim HA, Lee SH, Na EJ, Shim MJ
SIEMENS	Korea	South Jeju Combined Cycle Power Plant	PLANT (POWER)	ON SHORE	2019	20,000	CJ Logistics	Yang JM, Kim HA, Lee SH, Na EJ, Shim MJ
JGC Philippines	Philippines	SEC2	PLANT (POWER)	OFF SHORE	2016-2017	50,000	CJ Logistics	Yang JM, Kim HA, Lee SH, Na EJ, Shim MJ
JGC Philippines	Philippines	JH-2	PLANT (OTHER)	OFF SHORE	2016-2017	50,000	CJ Logistics	Yang JM, Kim HA, Lee SH, Na EJ, Shim MJ
JGC Philippines	Philippines	LOBP	OIL&GAS REFINERY	OFF SHORE	2016-2017	50,000	CJ Logistics	Yang JM, Kim HA, Lee SH, Na EJ, Shim MJ
JGC	Japan	ISHINOMAKI BIOMASS PJT	PLANT (POWER)	OFF SHORE	2022-2023	10,000	<b>IFE</b>	Yang JM, Kim HA, Lee SH, Na EJ, Shim MJ
JGC	Mongolia	UPSCALING RENEWABLE ENERGY SECTOR PJT	PLANT (POWER)	OFF SHORE	2020-2021	10,000	<b>IFE</b>	Yang JM, Kim HA, Lee SH, Na EJ, Shim MJ
JGC	KSA	JAZAN REFINERY & TERMINAL PROJECT	OIL&GAS REFINERY	ON&OFF SHORE	2013-2018	200,000	CJ Logistics	Yang JM, Kim HA, Lee SH, Na EJ, Shim MJ
JGC	Malaysia	PFLNG 2 PROJECT	PLANT (OTHER)	ON SHORE	2016-2018	120,000	CJ Logistics	Yang JM, Kim HA, Lee SH, Na EJ, Shim MJ
JGC	Algeria	HMD-S PROJECT	OIL&GAS REFINERY	OFF SHORE	2015-2018	200,000	CJ Logistics	Yang JM, Kim HA, Lee SH, Na EJ, Shim MJ

**Interfreight Engineering** is a **logistics expert group** composed of professionals with years experience in various logistics fields.

Under the motto of ‘ **Most efficiency, quickly, and safely**’, we, based on our experience and knowledge, **economize our customer’s cost and time.**

## Members Key Accomplishments

Client	Region	Project Name	Project Type	Work Scope	Duration	Volume (Ton)	Engaged Company	Person In Charge
JGC	Algeria	HRM 3 PROJECT	OIL&GAS REFINERY	OFF SHORE	2016-2019	200,000	CJ Logistics	Yang JM, Kim HA, Lee SH, Na EJ, Shim MJ
JGC	Indonesia	Bluesky Project	OIL&GAS REFINERY	OFF SHORE	2015-2016	70,000	CJ Logistics	Yang JM, Kim HA, Lee SH, Na EJ, Shim MJ
EMAS-AMC	Korea	Gaza FSO	OIL&GAS	ON SHORE	2015.04	20,000	PFS Korea	Jung HE
IHI	Vietnam	Van Phong 1 BOT – Thermal Power Plant Project	PLANT (POWER)	OFF SHORE	2021-2023	100,000	<b>IFE</b>	Yang JM, Kim HA, Lee SH, Na EJ, Shim MJ
Seadrill Global Services-U.S.A.	Korea	West Dorado, Draco, Aquila, Libra	OIL&GAS	ON SHORE	2013-2022	4 Drillships	PFS Korea	Jung HE
SUMITOMO	Indonesia	PT PLN PROYEK TIMOR PROJECT	PLANT (POWER)	OFF SHORE	2020-2022	10,000	<b>IFE</b>	Yang JM, Kim HA, Lee SH, Na EJ, Shim MJ
MHPS	Japan	SAIJO Thermal Power Plant - Unit 1	PLANT (POWER)	OFF SHORE	2021-2022	70,000	<b>IFE</b>	Yang JM, Kim HA, Lee SH, Na EJ, Shim MJ
MHPS	Korea	Hwaseong City Combined Cycle Power plant	PLANT (POWER)	ON&OFF SHORE	2018	100	CJ Logistics	Yang JM, Kim HA, Lee SH, Na EJ, Shim MJ
Doosan Mecatec	USA	Hugoton Renewable Diesel	PLANT	ON SHORE	2021.07	2,292	PFS Korea	Jung HE
Daewoo E&C	Botswana	KAZUNGULA BRIDGE CONST.	OTHER CONST.	OFF SHORE	2015-2022	50,000	Daewoo Logistics	Hong JK
Daewoo E&C	Algeria	Fertilizer Project	PLANT (OTHER)	OFF SHORE	2009-2011	150,000	CJ Logistics	Yang JM, Kim HA, Lee SH, Na EJ, Shim MJ
Daewoo E&C	Algeria	Boughzoul New City Project	OTHER CONST.	OFF SHORE	2009-2011	150,000	CJ Logistics	Yang JM, Kim HA, Lee SH, Na EJ, Shim MJ
Daewoo E&C	Papua New Guinea	LNG EPC3 project	OIL&GAS REFINERY	OFF SHORE	2010-2012	150,000	CJ Logistics	Yang JM, Kim HA, Lee SH, Na EJ, Shim MJ
MMBOLEO	Mexico	BOLEO COPPER MINE	OTHER CONST.	ON/OFF SHORE	2013-2023	900,000	Daewoo Logistics	Hong JK
HDGSK JV	Iraq	KARBALA REFINERY PJT	OIL&GAS REFINERY	ON/OFF SHORE	2015-2017	500,000	CJ Logistics	Yang JM, Kim HA, Lee SH, Na EJ, Shim MJ

**Interfreight Engineering** is a **logistics expert group** composed of professionals with years experience in various logistics fields.

Under the motto of ‘ **Most efficiency, quickly, and safely**’, we, based on our experience and knowledge, **economize our customer’s cost and time.**

## Members Key Accomplishments

Client	Region	Project Name	Project Type	Work Scope	Duration	Volume (Ton)	Engaged Company	Person In Charge
GSE&C	Ghana	KUMASI SUBSTATION	PLANT (OTHER)	OFF SHORE	2016-2019	27,000	Daewoo Logistics	Hong JK
CJ CHEILJEDANG	Brazil	DO Fertilize Plant Building Project	PLANT (OTHER)	OFF SHORE	2012-2015	80,000	CJ Logistics	Yang JM, Kim HA, Lee SH, Na EJ, Shim MJ
CJ CHEILJEDANG	Malaysia	Fertilize Plant Building Project	PLANT (OTHER)	OFF SHORE	2012-2015	80,000	CJ Logistics	Yang JM, Kim HA, Lee SH, Na EJ, Shim MJ
Samsung E&C	Bolivia	YPFB FERTILIZER PLANT	PLANT (OTHER)	ON/OFF SHORE	2013-2016	100,000	Daewoo Logistics	Hong JK
Samsung E&C	Mexico	INTERGEN ACS/SLP	PLANT (POWER)	OFF SHORE	2013-2016	35,000	Daewoo Logistics	Hong JK
Samsung E&C	Iraq	BADRA CPF PAHSE II	OIL&GAS	ON/OFF SHORE	2013-2018	150,000	Daewoo Logistics	Hong JK
Samsung E&C	Vietnam	SAMSUNG SEMV	OTHER CONST.	ON/OFF SHORE	2014-2017	32,000	Daewoo Logistics	Hong JK

# Global Network Global Freight Forwarding

We **design optimized global supply chains** with a **trusted global network**.  
For any shipment, anywhere in the world, we **create precise solutions**  
with a team of experts and **respond around the clock**.

## Global Partner Network of over 200 Companies | 24 Hours Operation

In-house Personnel

Long-term Partner



Denmark  
Henrik



UK  
Brian Kofoed



Italy  
Carolina



Algeria  
Walid



U.A.E  
Kim Dong Hyun



Saudi Arabia  
Kim Kwang Soo



India  
H. L. Santharam



Bangladesh  
Satish



China  
Eric Yuan




Japan  
Jang Jin Hee




Thailand  
Kim Gil Hwan



Malaysia  
Dennis Tan



USA West  
Sam Kim



USA Houston  
Frank Song

Key Global Partner



# Project Logistics

**Project logistics experts** who have worked on various projects with numerous global EPC companies **manage** and **execute all aspects of project logistics**. From preliminary logistics environment survey, logistics budgeting, shipment and customs clearance management, and **light to super heavy cargo transportation**.

## [ PERFORMANCE SERVICE AREAS ]

### PROJECT PRE-SURVEY ▶▶▶▶



Logistics Environment Survey



Analyzing Logistics Cost and Budgeting



Engineering-based Logistics Planning

### OFF-SHORE LOGISTICS EXECUTION ▶▶▶▶



Cargo Condition Check



Review Shipping Documents and Loading Plan



Cargo Loading According to Technical Plan

### ◀◀◀◀ ON-SHORE LOGISTICS EXECUTION



Temporary Storage and Cargo Management



Customs Clearance



POD  
Cargo Unloading and Inspection



Cargo Tracking



Sea & Air Transportation



POL  
Cargo Loading and Inspection



Customs Clearance



Arrange Suitable Transportation

### ▶▶▶▶ LAY DOWN AREA CARGO IN AND OUT CONTROL



Review Transportation Route, Processing Permits, Safety Planning & Training



Reinforce Transportation Route and Eliminate Obstacles



Arrange Suitable Transportation and Convoy



Managing Arrival Schedule and Installation



Project Site

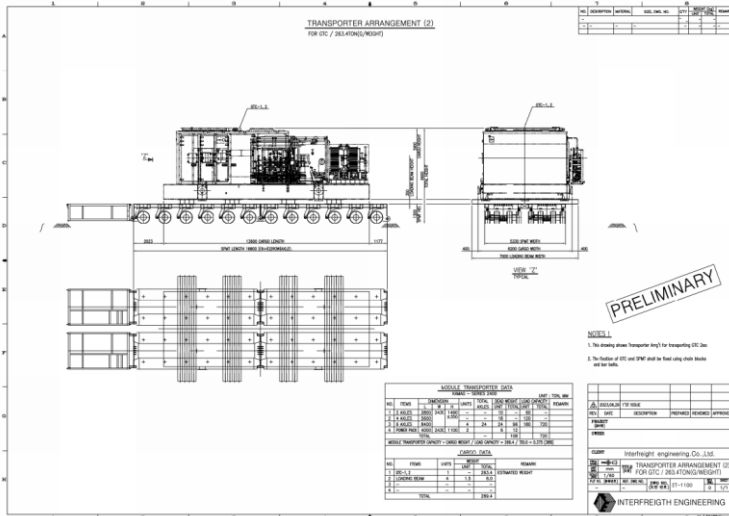
Cargo Condition Inspection And Final Report to Client

We **investigate** the **best transportation route** for **heavy & oversized cargo**.

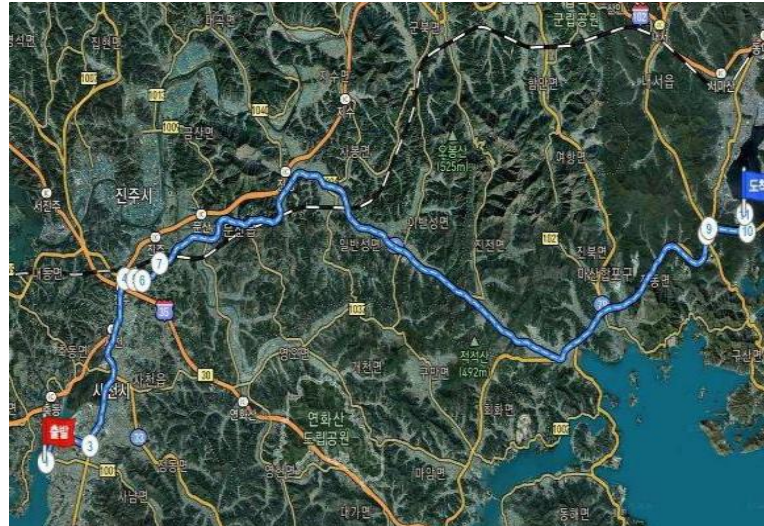
We also **design** the **optimal transportation method** through our engineers, **operate** suitable **special transportation equipment** such as hydraulic trailer and SPMT to provide **heavy cargo transportation services** in the **safest** way.

# Transportation Planning Permit Processing for Heavy Cargo

## Transportation Engineering



## Transporting Route Survey



## Certification of Bonded Transportation

부세운송신고필증 (반출신고증)

1. 신고지: 부산광역시 동구

2. 신고번호: 2022-05-14-0001

3. 신고일자: 2022. 05. 14

4. 신고시간: 14:00

5. 신고인: 김민준

6. 신고인 연락처: 010-1234-5678

7. 신고인 주소: 부산광역시 동구 123길 45

8. 신고인 직책: 대표이사

9. 신고인 직급: 대표이사

10. 신고인 직급: 대표이사

11. 신고인 직급: 대표이사

12. 신고인 직급: 대표이사

13. 신고인 직급: 대표이사

14. 신고인 직급: 대표이사

15. 신고인 직급: 대표이사

16. 신고인 직급: 대표이사

17. 신고인 직급: 대표이사

18. 신고인 직급: 대표이사

19. 신고인 직급: 대표이사

20. 신고인 직급: 대표이사

21. 신고인 직급: 대표이사

22. 신고인 직급: 대표이사

23. 신고인 직급: 대표이사

24. 신고인 직급: 대표이사

25. 신고인 직급: 대표이사

26. 신고인 직급: 대표이사

27. 신고인 직급: 대표이사

28. 신고인 직급: 대표이사

29. 신고인 직급: 대표이사

30. 신고인 직급: 대표이사

31. 신고인 직급: 대표이사

32. 신고인 직급: 대표이사

33. 신고인 직급: 대표이사

34. 신고인 직급: 대표이사

35. 신고인 직급: 대표이사

36. 신고인 직급: 대표이사

37. 신고인 직급: 대표이사

38. 신고인 직급: 대표이사

39. 신고인 직급: 대표이사

40. 신고인 직급: 대표이사

41. 신고인 직급: 대표이사

42. 신고인 직급: 대표이사

43. 신고인 직급: 대표이사

44. 신고인 직급: 대표이사

45. 신고인 직급: 대표이사

46. 신고인 직급: 대표이사

47. 신고인 직급: 대표이사

48. 신고인 직급: 대표이사

49. 신고인 직급: 대표이사

50. 신고인 직급: 대표이사

51. 신고인 직급: 대표이사

52. 신고인 직급: 대표이사

53. 신고인 직급: 대표이사

54. 신고인 직급: 대표이사

55. 신고인 직급: 대표이사

56. 신고인 직급: 대표이사

57. 신고인 직급: 대표이사

58. 신고인 직급: 대표이사

59. 신고인 직급: 대표이사

60. 신고인 직급: 대표이사

61. 신고인 직급: 대표이사

62. 신고인 직급: 대표이사

63. 신고인 직급: 대표이사

64. 신고인 직급: 대표이사

65. 신고인 직급: 대표이사

66. 신고인 직급: 대표이사

67. 신고인 직급: 대표이사

68. 신고인 직급: 대표이사

69. 신고인 직급: 대표이사

70. 신고인 직급: 대표이사

71. 신고인 직급: 대표이사

72. 신고인 직급: 대표이사

73. 신고인 직급: 대표이사

74. 신고인 직급: 대표이사

75. 신고인 직급: 대표이사

76. 신고인 직급: 대표이사

77. 신고인 직급: 대표이사

78. 신고인 직급: 대표이사

79. 신고인 직급: 대표이사

80. 신고인 직급: 대표이사

81. 신고인 직급: 대표이사

82. 신고인 직급: 대표이사

83. 신고인 직급: 대표이사

84. 신고인 직급: 대표이사

85. 신고인 직급: 대표이사

86. 신고인 직급: 대표이사

87. 신고인 직급: 대표이사

88. 신고인 직급: 대표이사

89. 신고인 직급: 대표이사

90. 신고인 직급: 대표이사

91. 신고인 직급: 대표이사

92. 신고인 직급: 대표이사

93. 신고인 직급: 대표이사

94. 신고인 직급: 대표이사

95. 신고인 직급: 대표이사

96. 신고인 직급: 대표이사

97. 신고인 직급: 대표이사

98. 신고인 직급: 대표이사

99. 신고인 직급: 대표이사

100. 신고인 직급: 대표이사

## Heavy & OCD Transportation

### Low-bed Trailer



### Hydraulic Trailer with Barge



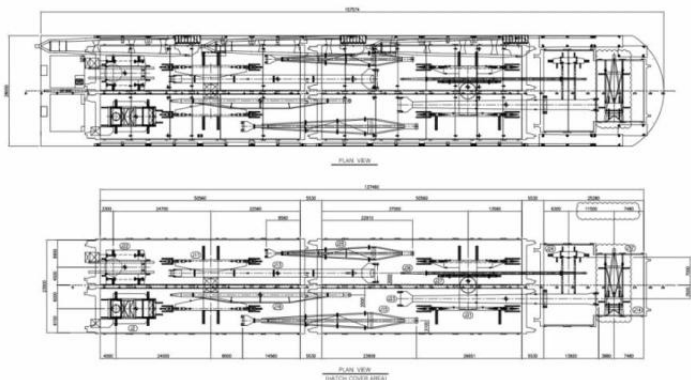
### SPMT Transportation



# Marine Engineering Sea Fastening Work Sea Fastening Material Fabrication Service

We provide **marine engineering services, sea fastening design and fabrication** for the ocean transportation of **ultra-heavy cargo** as well as marine transportation **safety planning and insurance**. With our specialized experience and know-how, we provide the **safest and most efficient solutions**.

## Planning Cargo Stowage



## Analysis and Calculation of Sea Fastening for Sea Transportation

**\* Applied Values for Motion and Seafastening / CASE-8**

Item	Design Criteria of Towing
Roll Angle	20.0 degrees
Roll Period	10.0 seconds
Pitch Angle	12.5 degrees
Pitch Period	10.0 seconds
Heave Acceleration	0.2 G

**\* Cargo Stowage Plan**

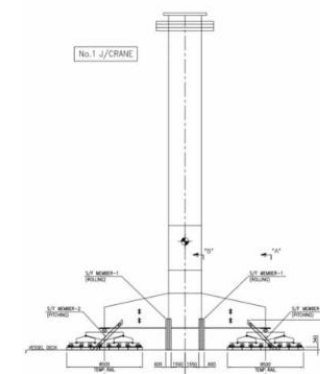
**Sea-fastening Force Calculation for Sea-Transportation**

GL Noble Denton - 0030/ND Rev.4

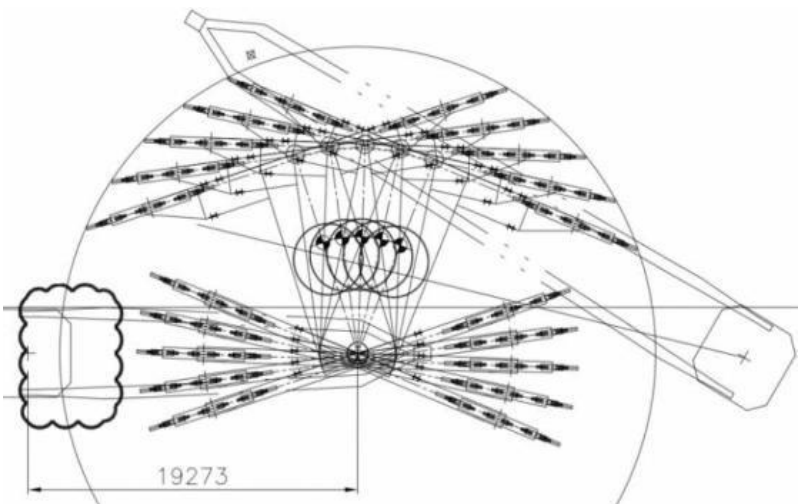
**\* Default Motion Criteria**

Nature of Transportation	C #	LOA (m)	B <sup>1/3</sup> (m)	LB <sup>1/3</sup>	Block Coeff	Full cycle period (secs)	Single amplitude Roll Pitch	Heave	
Unrestricted	1	> 180 and > 30	n/a	< 0.9	10	20"	10"	0.2 g	
	2	> 76 and > 23	n/a	any	10	20"	12.5"	0.2 g	
	3	< 76 or < 23	≥ 2.5	< 0.9	10	20"	15"	0.2 g	
	4	< 76 or < 23	≥ 2.5	≥ 0.9	10	25"	15"	0.2 g	
	5	< 76 or < 23	< 2.5	< 0.9	10	30"	30"	0.2 g	
	6	< 76 or < 23	< 2.5	≥ 0.9	10	25"	25"	0.2 g	
Weather restricted operations in non-bayge areas for a duration < 24 hours (see Section 7.9.2.d. For LB < 1.4 use unrestricted case.	7	any	≥ 2.5	any	10	10"	5"	0.1 g	
8	any	< 2.5, ≥ 1.4	any	10	10"	10"	0.1 g		
Weather restricted operations in bayge areas (see Section 7.9.2.e). For LB < 1.4 use unrestricted case.	9	any	≥ 2.5	any	10	5"	2.5"	0.1 g	
10	any	< 2.5, ≥ 1.4	any	10	5"	5"	0.1 g		
Inland and sheltered water transportations (see Section 7.9.2.f). For LB < 1.4 use unrestricted case.	11	any	≥ 1.4	any	Static	Equivalent to 0.1 g in both directions	0.0		
Independent leg jack-ups, ocean tow on own hull.	12	n/a	> 23	< 1.4	n/a	10	20"	20"	0.0
Independent leg jack-ups, 24-hour or location move.	13	n/a	> 23	< 1.4	n/a	10	10"	10"	0.0
Mat type jack-ups, ocean tow on own hull.	14	n/a	> 23	< 1.4	n/a	13	16"	16"	0.0
Mat type jack-ups, 24-hour or location move.	15	n/a	> 23	< 1.4	n/a	13	8"	8"	0.0

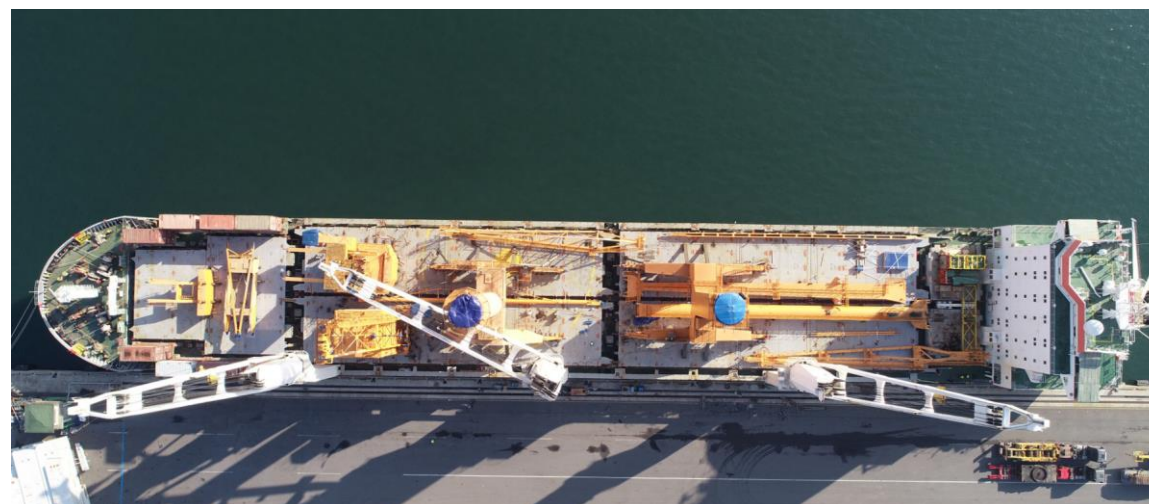
## Design Fastening Material



## Analysis and Calculation of Loading Plan



## Execution of Loading and Fastening According to a Carefully Engineered Plan



## Cargo Handling Safety Management Cargo Repair and Packaging Services

We provide demanding **cargo safety management services** for handling **high-value** and **heavy cargo**, maintenance of long-term storage cargo, bonded cargo, and packaging services for re-export cargo through our expert experience and know-how.



## Specialized Equipment Operation

Based on our rich experience and understanding, we provide a variety of **specialized equipment operation services** for handling **ultra-heavy cargo**.

### Floating Crane Lifting



### SPMT



### Mobile Crane



# IFE Work Experience

## New Contract and Execution

Interfreight Engineering has been serving as the **logistics partner** for **global EPC companies** since its establishment in 2020, conducting diverse project logistics worldwide.

Over the past **three years**, we have successfully executed logistics for **over 18 projects**. In **2024**, we have been selected as the **logistics partner** for **JGC Holdings Corporation** and secured the project logistics for the **Malaysia ZLNG project** and the **Australia GH2E project**.



### Malaysia ZLNG Project

Client Name	JGC
Region	Malaysia
Project Type	Ship Build
IFE Work Scope	On/Off Shote
Volume	Abt 150,000 F/T
Execution Period	Jul.2023-



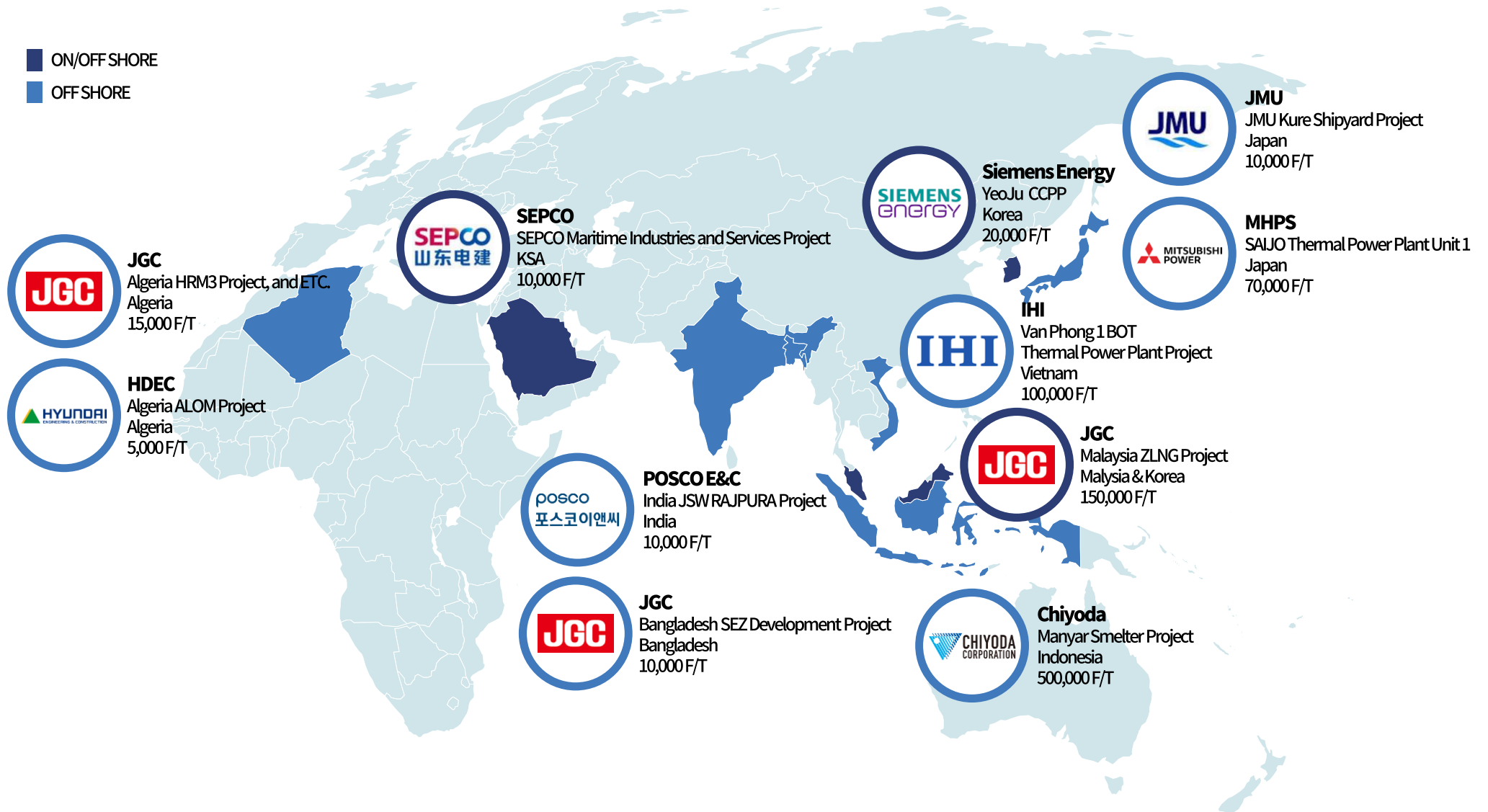
### Gladstone H2 Ecosystem (GH2E) Project

Client Name	JGC
Region	Yarwun, Australia
Project Type	Hydrogen
IFE Work Scope	On/Off Shote
Volume	Abt 30,000 F/T
Execution Period	Mar.2024-

\* The images in the photograph may differ from reality.

# IFE Work Experience

- ON/OFF SHORE
- OFF SHORE



# IFE Work Experience

Project Name	PJT Type	Client Name	Region	Work Scope	Cargo Volume	Duration
Manyar Smelter Project	Refinery	Chiyoda	Indonesia	Off-shore FWD (Sub-con)	Over 500,000 F/T	2021-
Van Phong 1 BOT Thermal Power Plant Project	Power Plant	IHI	Vietnam	Off-shore FWD (Sub-con)	Abt 100,000 F/T	2021-
Timor-1 (2X50MW) Coal Fired Steam Power Plant	Power Plant	Posco E&C China	Indonesia	Off-shore FWD (Sub-con)	Abt 70,000 F/T	2021-
SAIJO Thermal Power Plant Unit 1	Power Plant	MHPS	Japan	Off-shore FWD (Sub-con)	Abt 70,000 F/T	2021-2022.1Q
YeoJu CCPP	Power Plant	Siemens Energy	Korea	Off/On-shore Forwarding	Abt 20,000 F/T	2021-2022.2Q
Vietnam BIOMASS Project	Infra	JGC	Vietnam	Off-shore FWD (Sub-con)	Abt 20,000 F/T	2022-
JMU Kure Shipyard Project	Ship Build	JMU	Japan	Off-shore FWD (Sub-con)	Abt 10,000 F/T	2022-
SEPCO Maritime Industries and Services Project	Infra	SEPCO	KSA	Off/On-shore Forwarding	Over 10,000 F/T	2022-
Bangladesh SEZ Development Project	Infra	JGC	Bangladesh	Off-shore FWD (Sub-con)	Over 10,000 F/T	2022-



# IFE Work Experience

Project Name	PJT Type	Client Name	Region	Work Scope	Cargo Volume	Duration
India JSW RAJPURA Project	Infra	Posco E&C China	India	Off-shore FWD (Sub-con)	Abt 10,000 F/T	2021-
India Railway Project	Infra	SAMPYO	India	Off-shore FWD	Abt 5,000 F/T	2023-
KSA Jazan refinery Project	Refinery	JGC	KSA	Off/On-shore FWD (Chemical)	Under 5,000 F/T	2021-
Algeria HRM3 Project	Refinery	JGC	Algeria	Off-shore FWD (Sub-con)	Under 5,000 F/T	2021-
Algeria HMD-S Project	Refinery	JGC	Algeria	Off-shore FWD (Sub-con)	Under 5,000 F/T	2021-
Algeria HMD-UN Project	Refinery	JGC	Algeria	Off-shore FWD (Sub-con)	Under 5,000 F/T	2021-
CGN Daesan power plant Project	Power Plant	CGN	Korea	Off/On-shore Forwarding	Under 5,000 F/T	2022-
Algeria ALOM Project	Power Plant	HDEC	Algeria	Off-shore (Sub-con)	Under 5,000 F/T	2023-
Malaysia ZLNG Project	Ship Build	JGC	Korea& Malaysia	Off/On-shore Forwarding	Abt 150,000F/T	2023-



# IFE Work Experience

<b>Project Owner</b>	<b>GEMAK</b>
<b>Vendor</b>	<b>SANGNIM MSP</b>
<b>Loading date</b>	<b>MAR, 2022</b>
<b>Dimension (CM)</b>	<b>268 x 135 x 372</b>
<b>Weight (Ton)</b>	<b>290</b>
<b>POL</b>	<b>Busan, Korea</b>
<b>POD</b>	<b>Yalova, Turkey</b>
<b>Item</b>	<b>Jib crane</b>



<b>Project Owner</b>	<b>JGC CORPORATION</b>
<b>Vendor</b>	<b>Kohjitsu Co., Ltd.</b>
<b>Loading date</b>	<b>FEB, 2022</b>
<b>Dimension (CM)</b>	<b>606 x 244 x 259</b>
<b>Weight (Ton)</b>	<b>21</b>
<b>POL</b>	<b>Busan, Korea</b>
<b>POD</b>	<b>Qingdao, China</b>
<b>Item</b>	<b>Sodium Sulfur Battery</b>



# IFE Work Experience

<b>Project Owner</b>	<b>JGC CORPORATION</b>
<b>Vendor</b>	<b>KC Cottrell</b>
<b>Loading date</b>	<b>OCT, 2022</b>
<b>Dimension (CM)</b>	<b>240 x 240 x 450</b>
<b>Weight (Ton)</b>	<b>20</b>
<b>POL</b>	<b>Masan Gapo New port, Korea</b>
<b>POD</b>	<b>Masan #4 Port, Korea</b>
<b>Item</b>	<b>Ash Storage Silo</b>

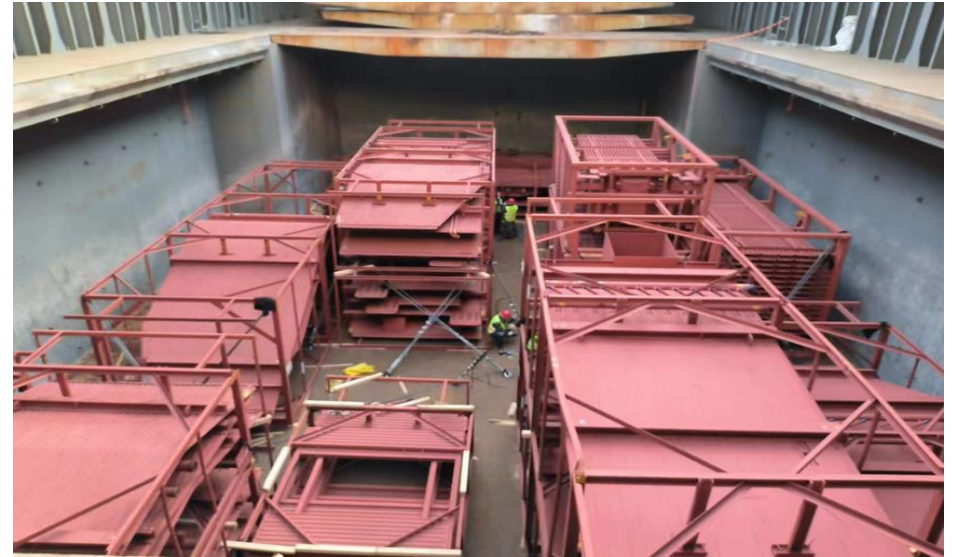


<b>Project Owner</b>	<b>SUMITOMO</b>
<b>Vendor</b>	<b>Tong Yang</b>
<b>Loading date</b>	<b>JAN, 2023</b>
<b>Dimension (CM)</b>	<b>800 x 245 x 268</b>
<b>Weight (Ton)</b>	<b>9</b>
<b>POL</b>	<b>Busan, Korea</b>
<b>POD</b>	<b>Surabaya, Indonesia</b>
<b>Item</b>	<b>Fan</b>



# IFE Work Experience

<b>Project Owner</b>	<b>CHIYODA</b>
Vendor	Sumitomo SHI FW
Loading date	JAN, 2023
Dimension (CM)	940 x 334 x 170
Weight (Ton)	15
POL	Zhuhai, China
POD	Jiipe, Indonesia
Item	Boiler Pressure Parts



<b>Project Owner</b>	<b>CHIYODA</b>
Vendor	Metso Outotec
Loading date	FEB, 2023
Dimension (CM)	291 X 274 X 300
Weight (Ton)	5
POL	Tianjin, China
POD	Jiipe, Indonesia
Item	Tank



# IFE Work Experience



<b>Project Owner</b>	<b>CHIYODA</b>
Vendor	Metso Outotec
Loading date	FEB, 2023
Dimension (CM)	3133 x 398 x 388
Weight (Ton)	68
POL	Dalian, China
POD	Jiipe, Indonesia
Item	Evaporator and crystallizer

<b>Project Owner</b>	<b>CHIYODA</b>
Vendor	NIKKISO
Loading date	FEB, 2023
Dimension (CM)	1123 x 312 x 268
Weight (Ton)	60
POL	Taipei, Taiwan
POD	Surabaya, Indonesia
Item	Chemical Injection

# IFE Work Experience

Project Owner	CHIYODA
Vendor	NVSY
Loading date	FEB, 2023
Dimension (CM)	103 x 245 x 265
Weight (Ton)	8
POL	Busan, Korea
POD	Surabaya, Indonesia
Item	Silencer



Project Owner	CHIYODA
Vendor	Daikure
Loading date	MAR, 2023
Dimension (CM)	579 x 392 x 225
Weight (Ton)	26
POL	Kaohsiung, Taiwan
POD	Surabaya, Indonesia
Item	Mill Drying Air Heater

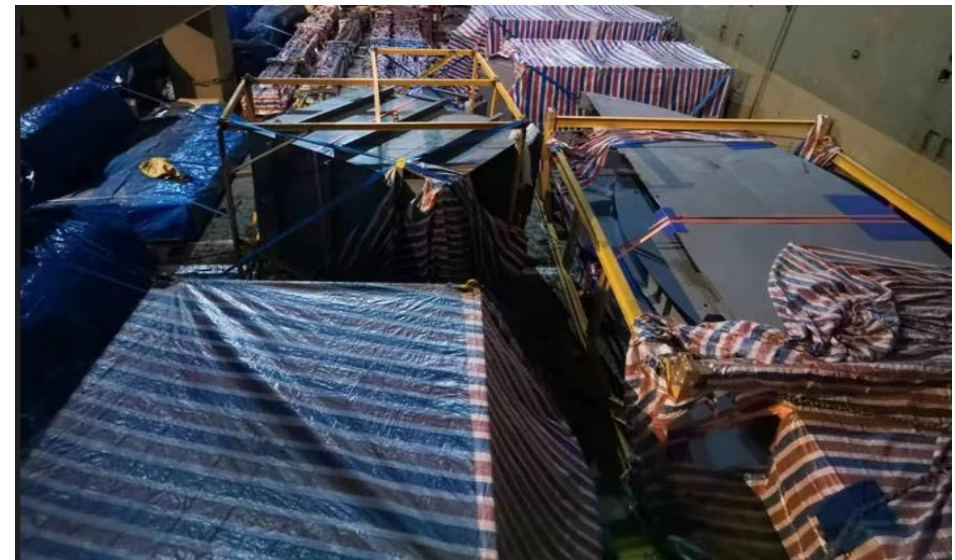


# IFE Work Experience

Project Owner	CHIYODA
Vendor	Iljin Energy
Loading date	MAR, 2023
Dimension (CM)	945 x 185 x 250
Weight (Ton)	22
POL	Busan, Korea
POD	Surabaya, Indonesia
Item	Dump Condenser



Project Owner	CHIYODA
Vendor	Boustead International Heaters
Loading date	MAR, 2023
Dimension (CM)	800 x 310 x 310
Weight (Ton)	15
POL	Shanghai, China
POD	Jiipe, Indonesia
Item	Superheater



# IFE Work Experience

<b>Project Owner</b>	<b>SEPCO</b>
Vendor	INTLEF Oil and Gas Group
Loading date	MAR, 2023
Dimension (CM)	1280 x 450 x 130
Weight (Ton)	16ton
POL	Shanghai, China
POD	Dammam, KSA
Item	Davit Crane



<b>Project Owner</b>	<b>CHIYODA</b>
Vendor	Dong Hwa Entec
Loading date	MAR, 2023
Dimension (CM)	1172 x 320 x 408
Weight (Ton)	58
POL	Masan, Korea
POD	Jiippe, Indonesia
Item	Surface condenser



# IFE Work Experience

<b>Project Owner</b>	<b>CHIYODA</b>
<b>Vendor</b>	<b>KC KOTTREL</b>
<b>Loading date</b>	<b>MAR, 2023</b>
<b>Dimension (CM)</b>	<b>360 x 230 x 210</b>
<b>Weight (Ton)</b>	<b>20</b>
<b>POL</b>	<b>Masan, Korea</b>
<b>POD</b>	<b>Jiippe, Indonesia</b>
<b>Item</b>	<b>Control Panel</b>



<b>Project Owner</b>	<b>CHIYODA</b>
<b>Vendor</b>	<b>Atlas Copco</b>
<b>Loading date</b>	<b>APR, 2023</b>
<b>Dimension (CM)</b>	<b>1011 x 326 x 355</b>
<b>Weight (Ton)</b>	<b>17</b>
<b>POL</b>	<b>Shanghai, China</b>
<b>POD</b>	<b>Surabaya, Indonesia</b>
<b>Item</b>	<b>Air compressor</b>



# IFE Work Experience

<b>Project Owner</b>	<b>SEPCO</b>
Vendor	Hyosung Heavy Ind
Loading date	APR, 2023
Dimension (CM)	1041 x 390 x 442
Weight (Ton)	33
POL	Busan, Korea
POD	Dammam, KSA
Item	Motor



<b>Project Owner</b>	<b>CALCUTTA SPRINGS LIMIT</b>
Vendor	Sampyo Railway
Loading date	MAY, 2023
Dimension (CM)	430 x 360 x 350
Weight (Ton)	35
POL	Masan, Korea
POD	Kolkata, India
Item	Flah Butt Welding System



# IFE Work Experience

<b>Project Owner</b>	<b>CHIYODA</b>
<b>Vendor</b>	CCE Cast Con Engineering
<b>Loading date</b>	JUN, 2023
<b>Dimension (CM)</b>	438 x 432 x 300
<b>Weight (Ton)</b>	33
<b>POL</b>	Shanghai, China
<b>POD</b>	Jiipe, Indonesia
<b>Item</b>	Slag Ladle



<b>Project Owner</b>	<b>JGC CORPORATION</b>
<b>Vendor</b>	SPG Dry Cooling
<b>Loading date</b>	JUN, 2023
<b>Dimension (CM)</b>	1291 x 248 x 128
<b>Weight (Ton)</b>	10.9
<b>POL</b>	Qingdao, China
<b>POD</b>	Yokohama, Japan
<b>Item</b>	Air Cooled Condenser



# IFE Work Experience

Project Owner	SUZHOU SECOTE PRECISION ELECTRONIC
Vendor	NEXUS 1
Loading date	JUN, 2023
Dimension (CM)	280 x 185 x 245
Weight (Ton)	8
POL	Incheon, Korea
POD	Shanghai, China
Item	Auto Wafer Inspection system



Project Owner	JAPAN MARINE UNITED CORPORATION
Vendor	PANASIA
Loading date	SEP, 2023
Dimension (CM)	430 x 300 x 260
Weight (Ton)	2
POL	Busan, Korea
POD	Hiroshima, Japan
Item	Damper



# IFE Work Experience

<b>Project Owner</b>	<b>JAPAN MARINE UNITED CORPORATION</b>
Vendor	SMS-SME PTE. LTD.
Loading date	SEP, 2023
Dimension (CM)	5070 x 135 x 1305
Weight (Ton)	62
POL	Nantong, China
POD	Kure, Japan
Item	Lashing Bridge



<b>Project Owner</b>	<b>MES</b>
Vendor	32 Vendors
Loading date	2 VOY per month
Dimension (CM)	1,000 FT / per VOY
Weight (Ton)	500 Ton / per VOY
POL	Busan, Korea
POD	Fukai, Japan
Item	Ship Build Materials





# ***SAFE, FAST, AND EFFICIENCY***

*We are Industrial Supply Chain Management professionals, INTERFREIGHT ENGINEERING*

We transport your value safely, quickly, and in the most efficient way.

We aim at being a group of industrial and technical logistics professionals.



**INTERFREIGHT  
ENGINEERING**

<http://www.Interfreight-eng.com>

[ife@interfreight-eng.com](mailto:ife@interfreight-eng.com)